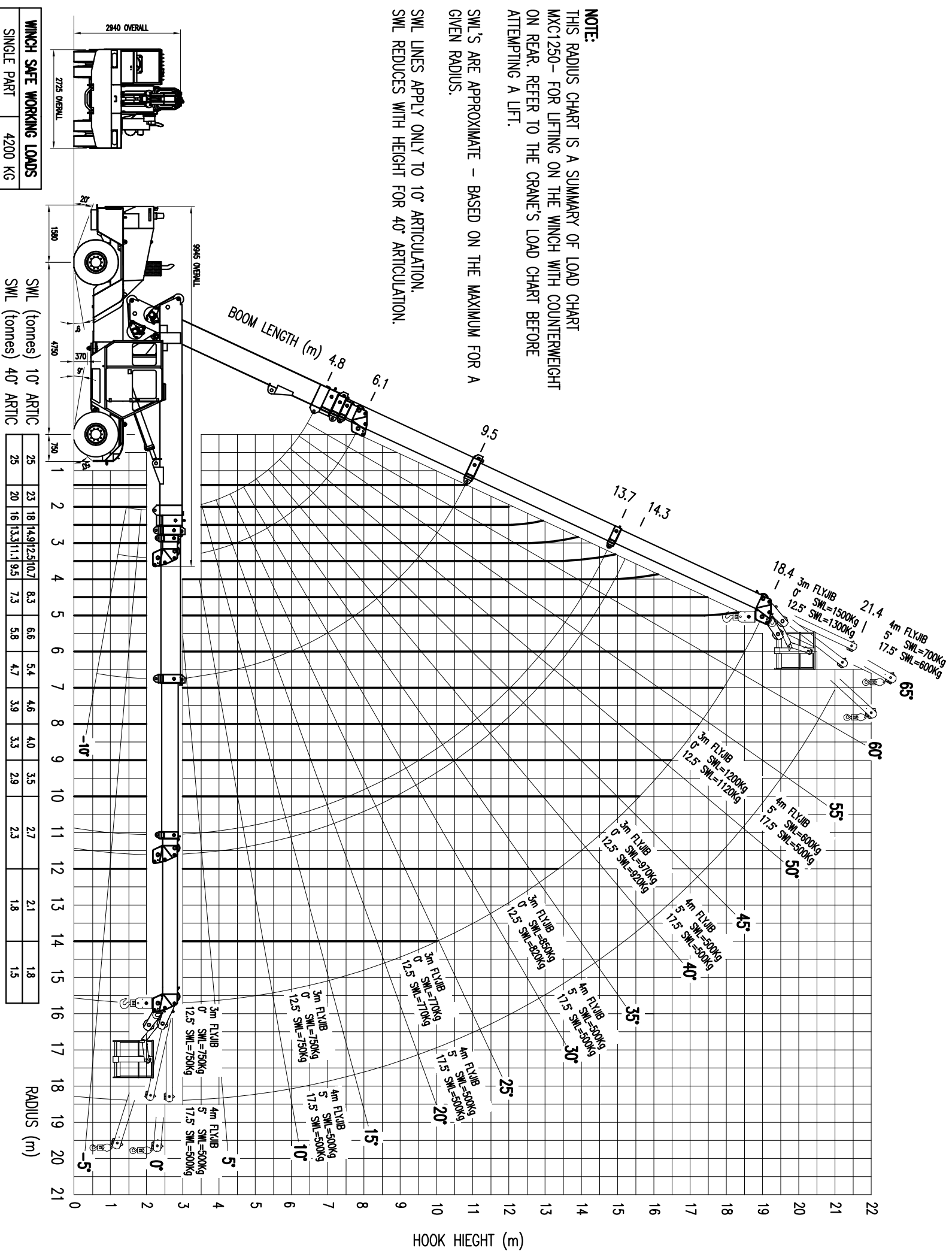


**NOTE:**  
 THIS RADIUS CHART IS A SUMMARY OF LOAD CHART  
 MCX1250 – FOR LIFTING ON THE WINCH WITH COUNTERWEIGHT  
 ON REAR. REFER TO THE CRANE'S LOAD CHART BEFORE  
 ATTEMPTING A LIFT.

SWL'S ARE APPROXIMATE – BASED ON THE MAXIMUM FOR A  
 GIVEN RADIUS.

SWL LINES APPLY ONLY TO 10° ARTICULATION.  
 SWL REDUCES WITH HEIGHT FOR 40° ARTICULATION.



WINCH SAFE WORKING LOADS	
SINGLE PART	4200 KG
TWO PARTS	8400 KG
FOUR PARTS	16800 KG
SIX PARTS	25000 KG

REV	CHG	BY	INTER	DATE	UNLESS OTHERWISE STATED ALL WELDING TO AS1554 CATEGORY SP AND ALL DIMENSIONS IN (mm) & TOLERANCED TO LIMITS SHOWN.	AS 1100	DATE
B	UPDATED	SR	YES	16/07/04	NOMINAL SIZE UP TO ABOVE 150 ABOVE 300 ABOVE 1000	DO NOT SCALE	DRN
A	40° SLEW ADDED	MW	YES	20/12/99	MACHINING ±0.1 ±0.25 ±0.5 ±1.0	SHEET SIZE A3	CKD
	CHANGE DETAILS				FABRICATION ±0.5 ±1.0 ±1.5 ±2.5	SCALE 1:125	APPD

**FRANVIA CRANES LTD**  
 MOBILE CRANE MANUFACTURERS  
 A.C.N. 010 671 048

**LOAD CHART PICTORIAL**  
 MAC 25 CRANE

DRG No. **MC25-A-1-017**

THIS DRAWING SHALL REMAIN THE SOLE PROPERTY OF FRANVIA CRANES PTY. LTD. & MUST NOT BE COPIED OR DISCLOSED WITHOUT THEIR WRITTEN APPROVAL.

PRODUCT No. : **MXA1017B**